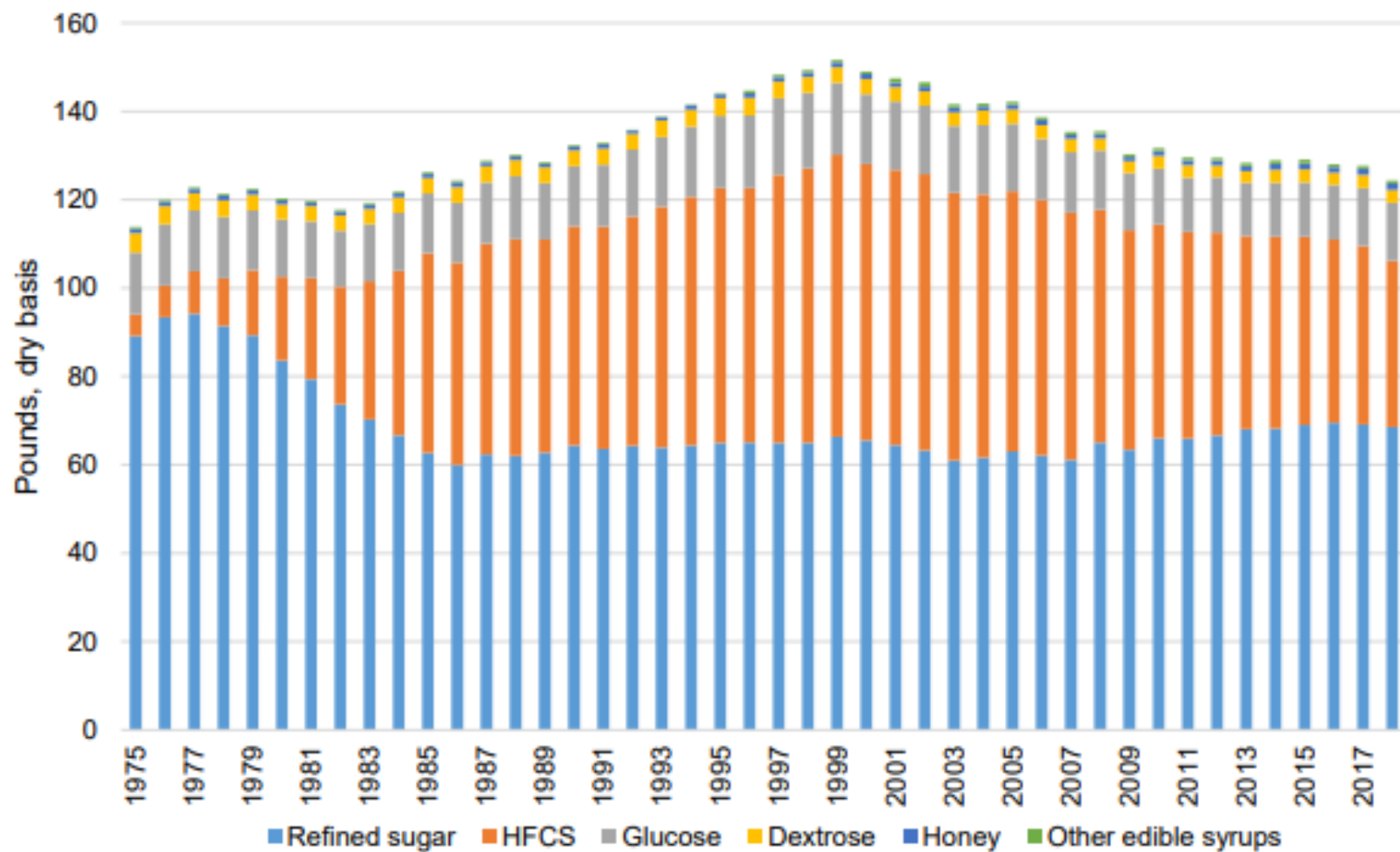
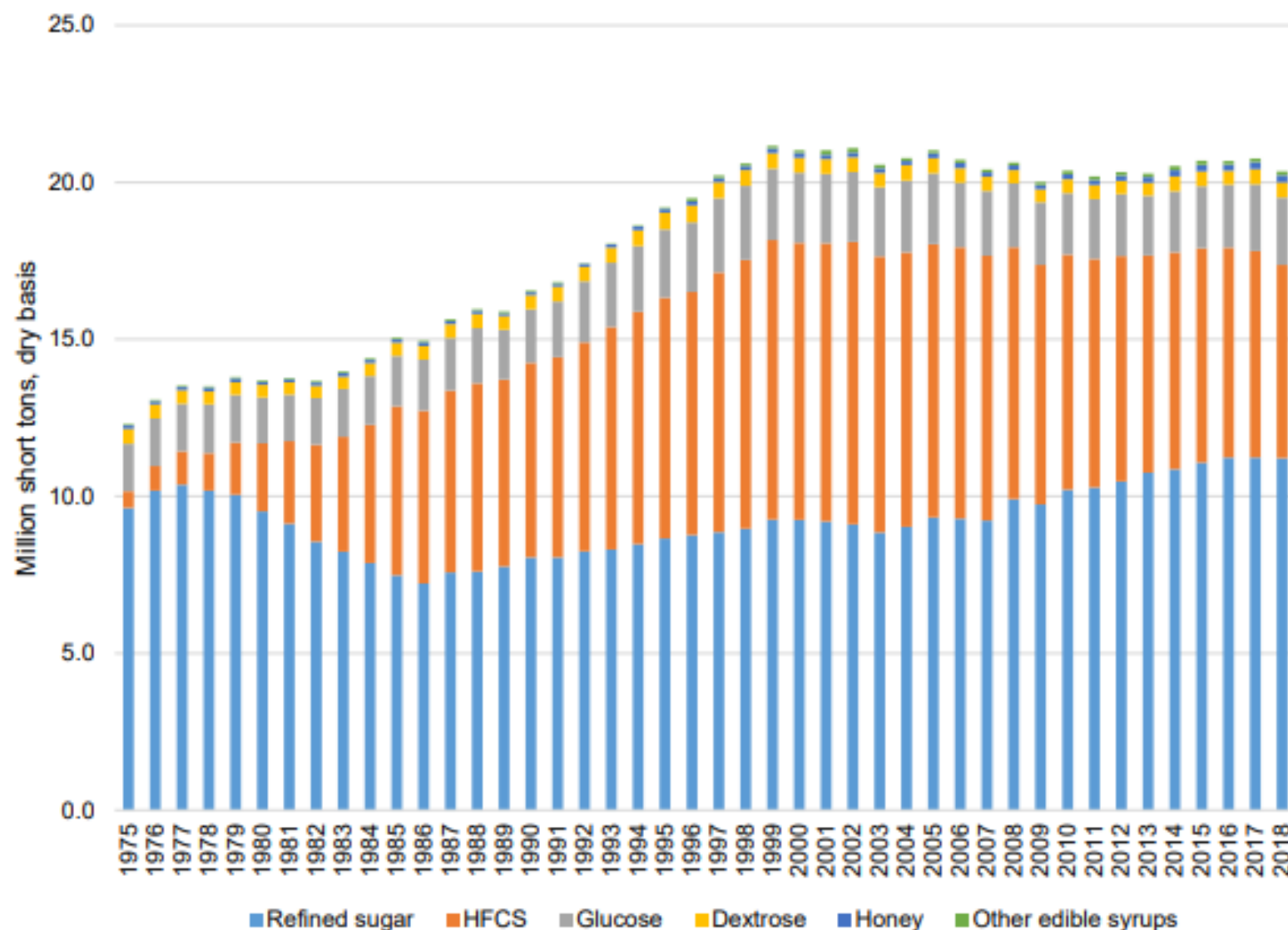


Figure 10  
 Per capita U.S. caloric sweetener deliveries for food and beverage use, calendar year, 1975 to 2018



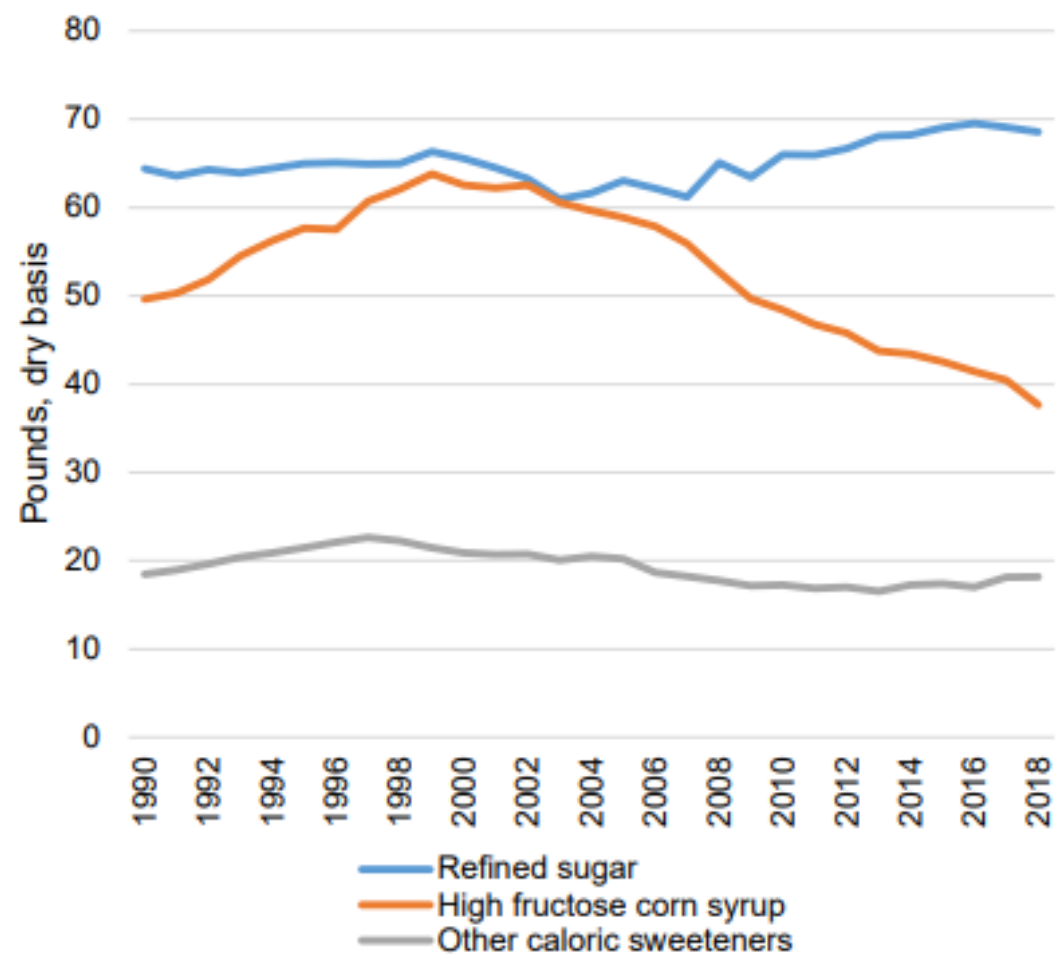
Source: USDA, Economic Research Service.

Figure 9  
**Total U.S. caloric sweetener deliveries for food and beverage use, calendar year, 1975 to 2018**



Source: USDA, Economic Research Service

Figure 11  
Per capita U.S. caloric sweetener deliveries for food and beverage use, calendar year, 1990 to 2018



Source: Economic Research Service, U.S. Dept. of Agriculture.

Table 7: Average annual growth rates for total caloric sweeteners deliveries, calendar year

	<u>3-year</u>	<u>10-year</u>	<u>15-year</u>	<u>20-year</u>
	<i>Percent</i>			
Refined sugar	0.40	1.23	1.58	1.12
HFCS	-3.43	-2.64	-2.38	-1.65
Total caloric sweetener	-0.57	-0.14	-0.07	-0.06
U.S. population	0.66	0.72	0.80	0.85

Source: USDA, Economic Research Service.